

PART SE 1/4 SEC 23, SW 1/4 SEC 24 & NW 1/4 SEC 25, T.5N., R.1W., S.L.B. & M.
SPRING CREEK ESTATES SUBDIVISION NO. 2

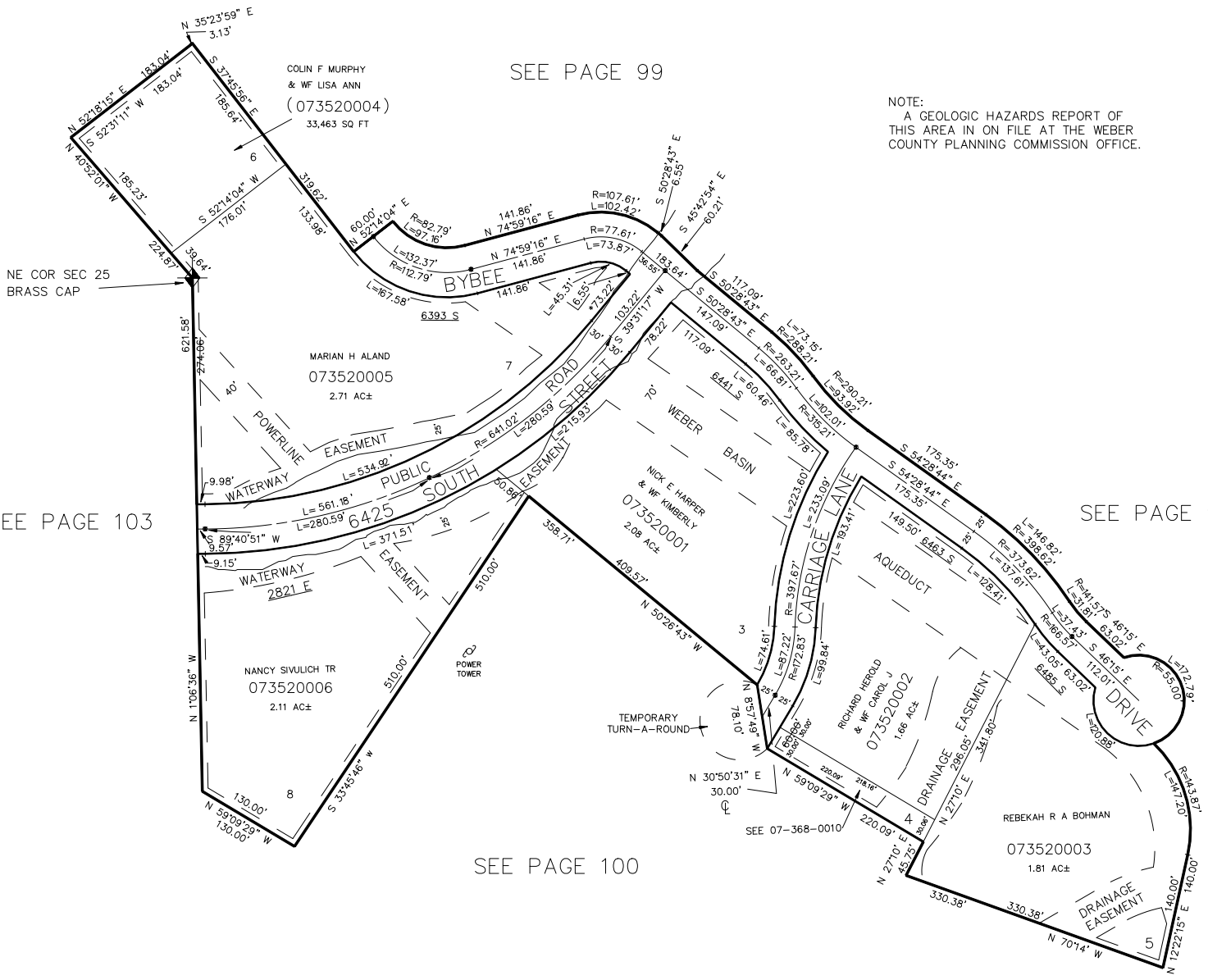
352

LOTS 3 - 8

IN WEBER COUNTY

SCALE 1" = 100'

TAXING UNIT: 54



SEE PAGE 99

NOTE:
 A GEOLOGIC HAZARDS REPORT OF
 THIS AREA IS ON FILE AT THE WEBER
 COUNTY PLANNING COMMISSION OFFICE.

SEE PAGE 103

SEE PAGE 99

SEE PAGE 100

*SEE CORRECTION AFFT.
 3-25-92 (1622-160)

7' UTILITY & DRAINAGE EASEMENTS EACH
 SIDE OF PROPERTY LINES AS INDICATED
 BY DASHED LINES EXCEPT AS OTHERWISE
 SHOWN.

FOR COMPLETE ENG DATA SEE
 ORIGINAL DEDICATION PLAT IN
 BOOK 30, PAGE 89 OF RECORDS.